

PLAYA | RAS EL HEKMA

PLAYA RAS EL HEKMA a captivating beachfront haven that embodies luxury living at its finest. PLAYA offers an exclusive community tailored for those with a discerning taste, an appreciation for natural beauty, and a desire for a truly exceptional lifestyle. Playa offers a harmonious blend of nature and elegant architecture with convenient pathways surrounded by scenic greenery, pristine backdrops and stunning sea-view homes with endless amenities that meets your everyday need. PLAYA's main spine brings about a vibrant culture and movement with an array of activities such as cycling skate boarding and jogging. Whilst a sports complex that inspires wellbeing and a lively downtown guaranteeing plenty of entertainment for friends and families artfully designed to inspire contemporary lifestyles. In addition to a 5 star hotel that provides luxurious experience and high end accommodations featuring comfortable interiors and mesmerizing open views.

PLAYA RAS EL HEKMA IS THE PLACE TO BE





architecture.

An architecture with a mutual dialogue of the modern Mediterranean.. in a series of artistic and architectural expressions that have put the north coast after seashell and the G hotel on the design map. In playa ras el hekma, we vindicate the value of functional and avant-garde architecture, with different solutions for users and residents. Our architecture seeks SERENITY, TRANQUILITY AND PEACE.leaving you in a transcendent state that never washes over.

d e s i g n .

“less is definitely more. Functional yet trendy, modern yet warm and inviting.“

It's the simplicity in the design that makes homes at Playa Ras El Hekma so beautiful, it goes back to the fundamentals of design that focuses on presenting a calm and relaxing feel. After all, that is the feeling you often get from being at the beach or in a seaside environment.

Every home at PLAYA will have a seamless connection between the interior and exterior spaces. Along with the continuation of the same or similar flooring, the openings can be opened completely with the doors stacking neatly to one side for the indoor and outdoor living to become one big space. As well as bigger windows and more glass elements are designed to capture the view and allow maximum light and fresh breeze to circulate and increase the overall beachside feel to the home

The inspired elements are as open plan living, natural materials and textures, bright and airy colors, simple lines and a simplistic layout and features that flow easily throughout the home. Cool whites and light tones in the paintwork and light finishes internally sets the tone of PLAYA homes alongside earthy tones of greys and light browns. PLAYA's architectural concept and aesthetics promise to spur life with simple abstraction and delightful contrast.



masterplan.



Disclaimer: All materials, dimensions and drawings are approximate. Information is subject to change without notice. Drawings are not to scale and actual usable floor space may vary from the state floor plans. The developer reserves the right to make revisions to the floor plans.

B E A C H F R O N T
M A N S I O N I





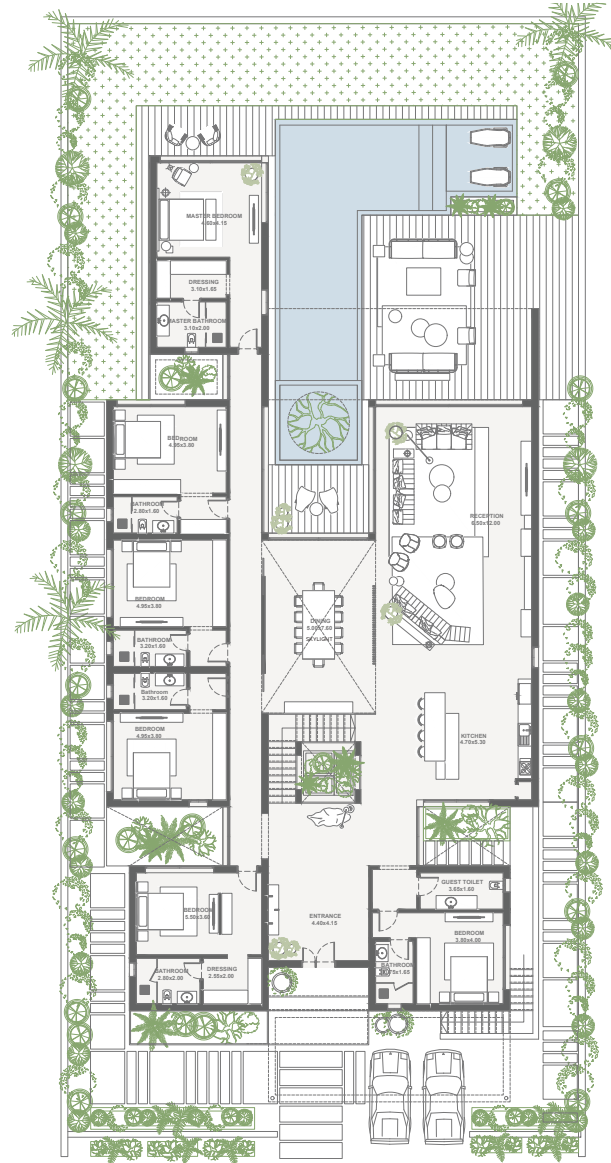












GROUND FLOOR

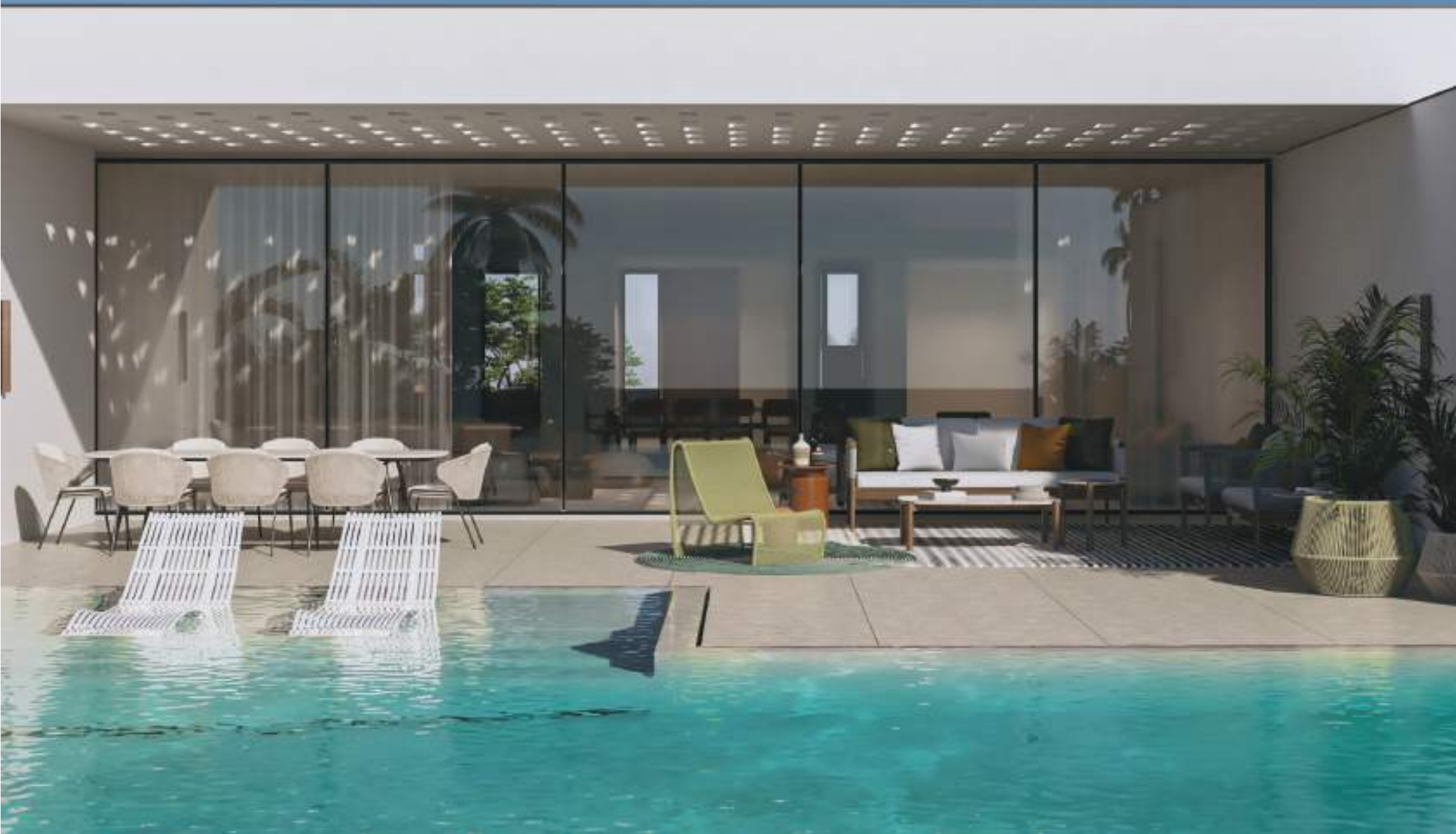


BASEMENT

B E A C H F R O N T
M A N S I O N 2







633 m²



GROUND FLOOR



BASEMENT

T H E S E A V I E W

ONE STOREY VILLA











THE SEA VIEW
ONE STOREY VILLA (5BR)

GRAND

net area 330 m²
terraces 50 m²

total area 380 m²

OPTIONAL OPEN OR CLOSED KITCHEN



GROUND FLOOR

DISCLAIMER: Terraces are not included

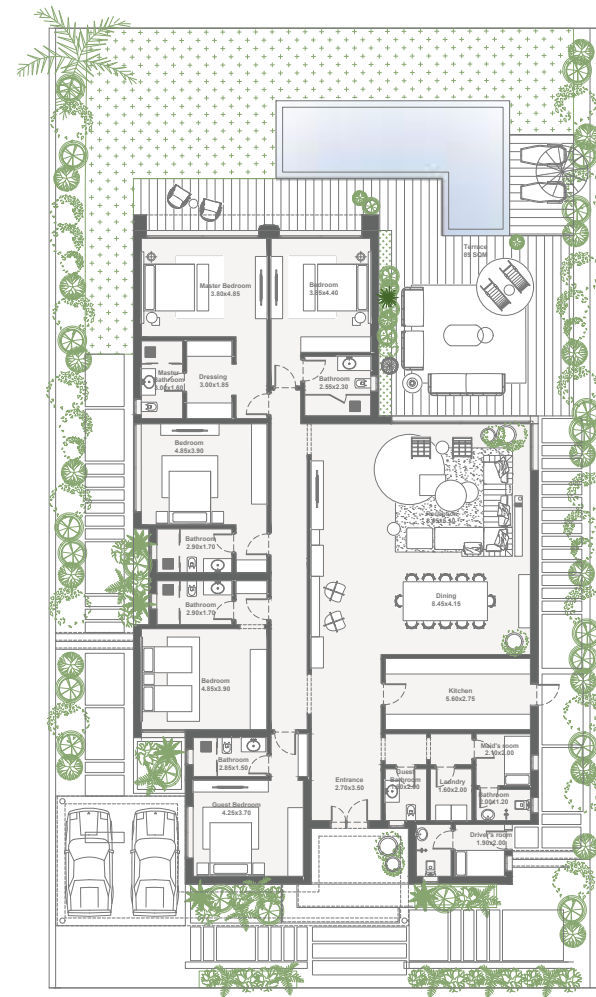
THE SEA VIEW
ONE STOREY VILLA (5BR)

DELUXE

net area 330 m²

OPTIONAL OPEN OR CLOSED KITCHEN

GROUND FLOOR



DISCLAIMER: Terraces are not included

BEACH HOUSE
VILLA











PLAYA | RAS EL HEKMA





PLAYA | RAS EL HEKMA



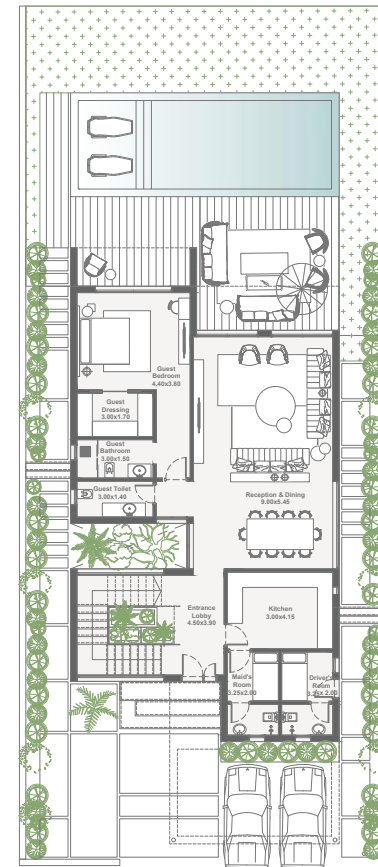


BEACH HOUSE VILLA (5BR)

GRAND

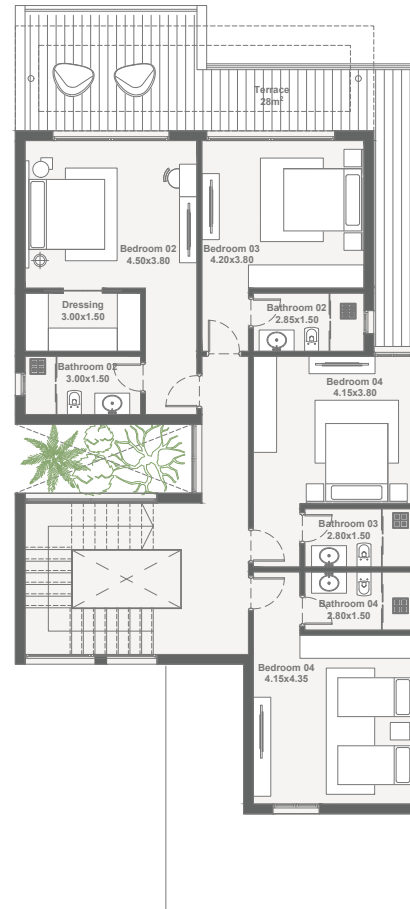
net area 304 m²
terraces 32 m²

total area 336 m²



GROUND FLOOR

DISCLAIMER: Terraces are not included



FIRST FLOOR

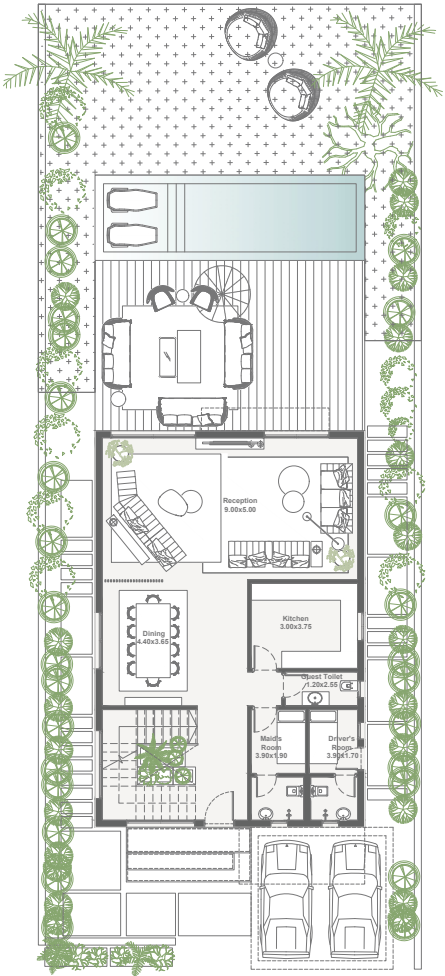
DISCLAIMER: Terraces are not included

BEACH HOUSE
VILLA (4BR)

DELUXE

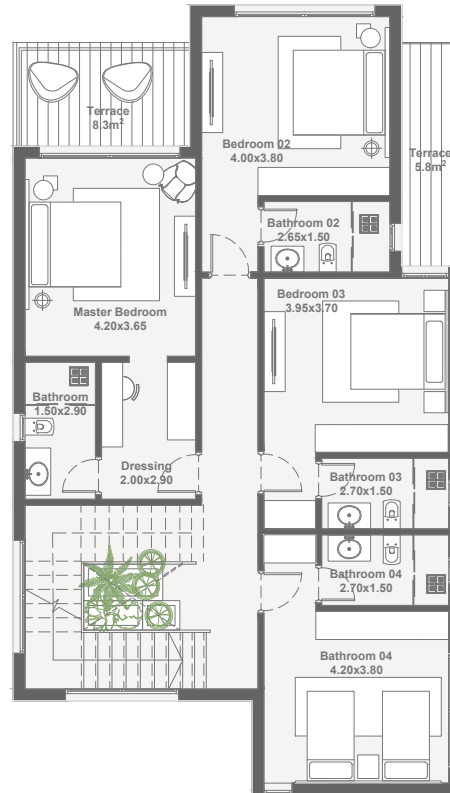
net area 264 m²
terraces 14 m²

total area 278 m²



GROUND FLOOR

DISCLAIMER: Terraces are not included



FIRST FLOOR

DISCLAIMER: Terraces are not included

T W I N H O U S E









PLAYA | RAS EL HEKMA

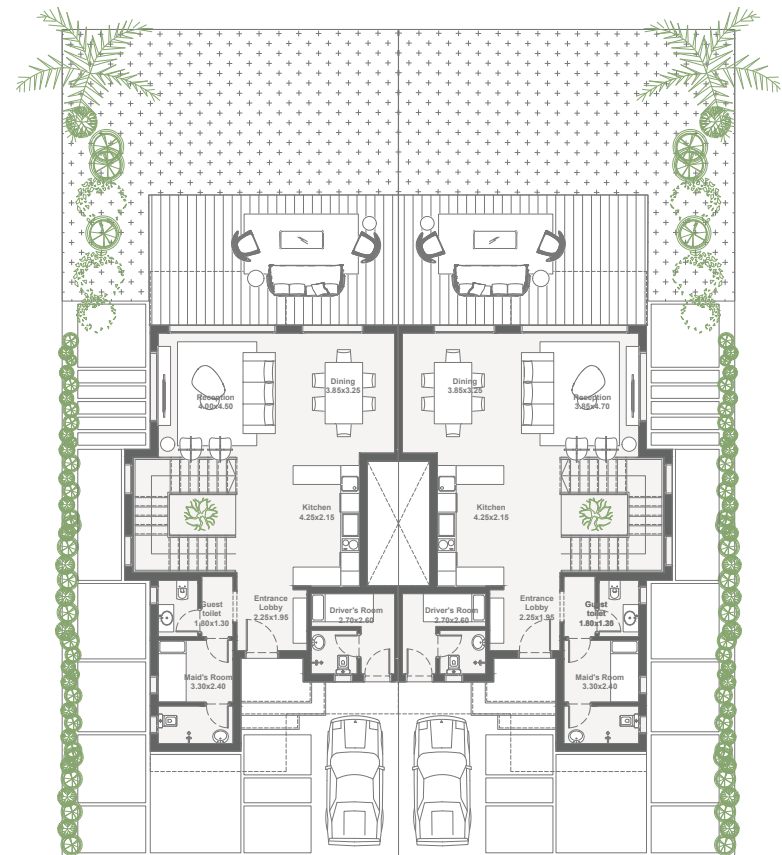


TWIN HOUSE (4BR)

GRAND

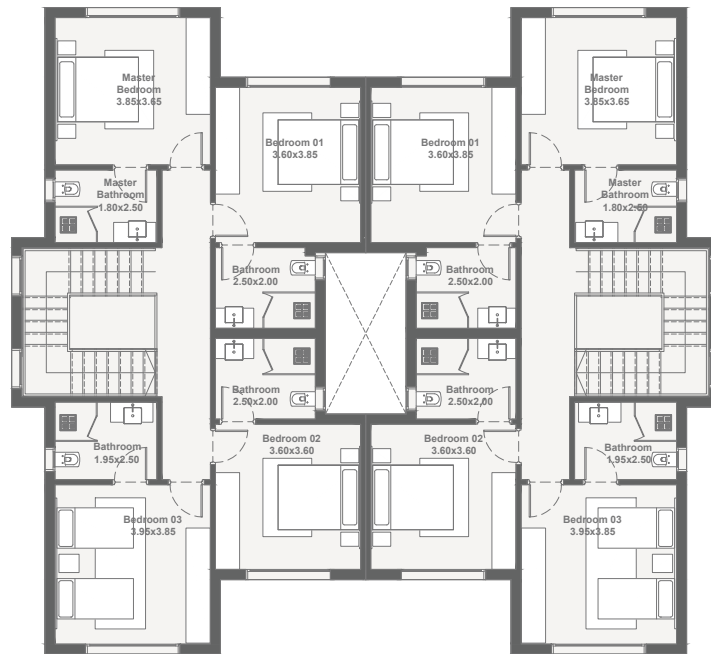
net area 208 m²
terraces 5 m²

total area 213 m²



GROUND FLOOR

DISCLAIMER: Terraces are not included



FIRST FLOOR

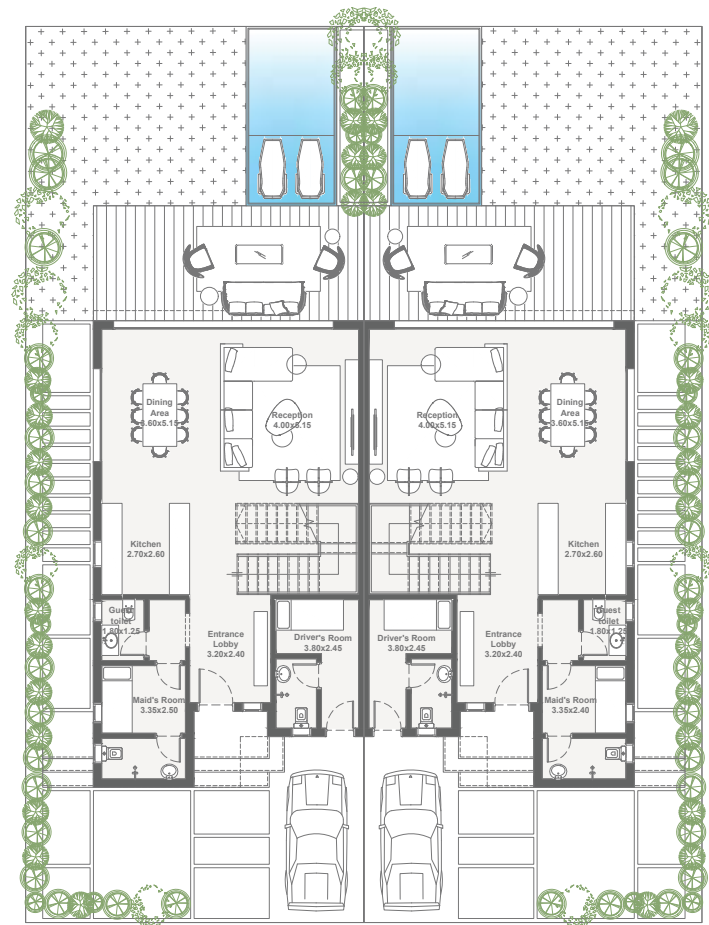
DISCLAIMER: Terraces are not included

TWIN HOUSE (4BR)

DELUXE

net area 205 m²
terraces 12 m²

total area 217 m²



GROUND FLOOR

DISCLAIMER: Terraces are not included



FIRST FLOOR

DISCLAIMER: Terraces are not included

T O W N H O M E



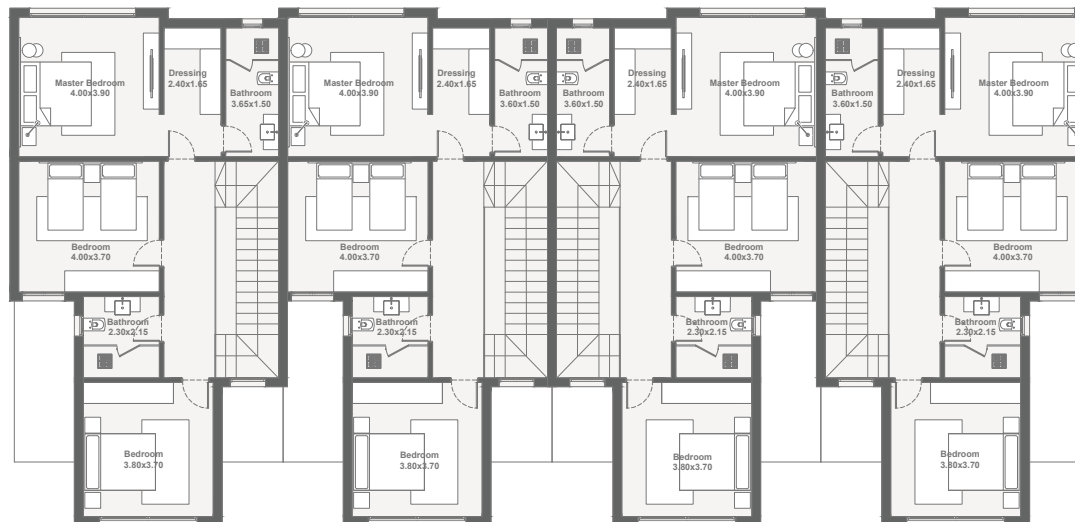
TOWN HOME (3BR)

net area 186 m²



GROUND FLOOR

DISCLAIMER: Terraces are not included



FIRST FLOOR

DISCLAIMER: Terraces are not included

H O R I Z O N B E A C H
H O U S E









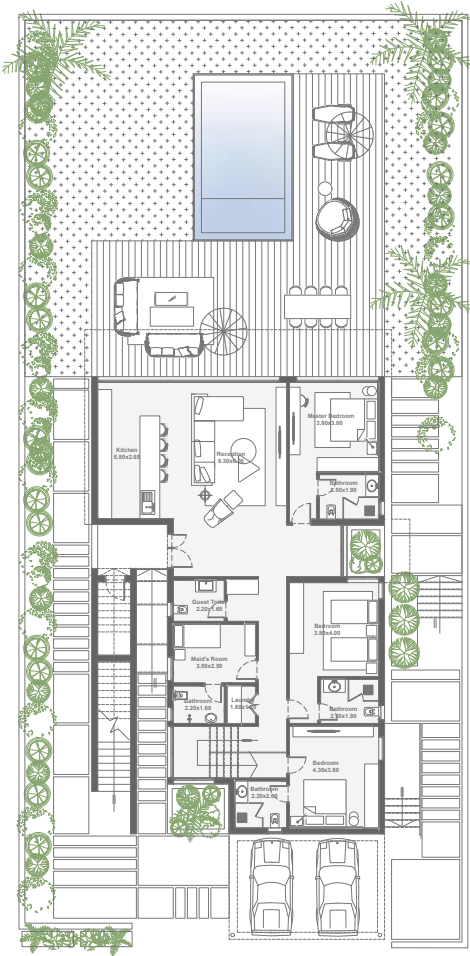


HORIZON BEACH
HOUSE (3BR)

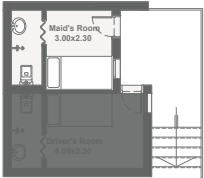
GROUND

net area 191 m²
basement 11 m²

total area 202 m²



GROUND FLOOR



BASEMENT

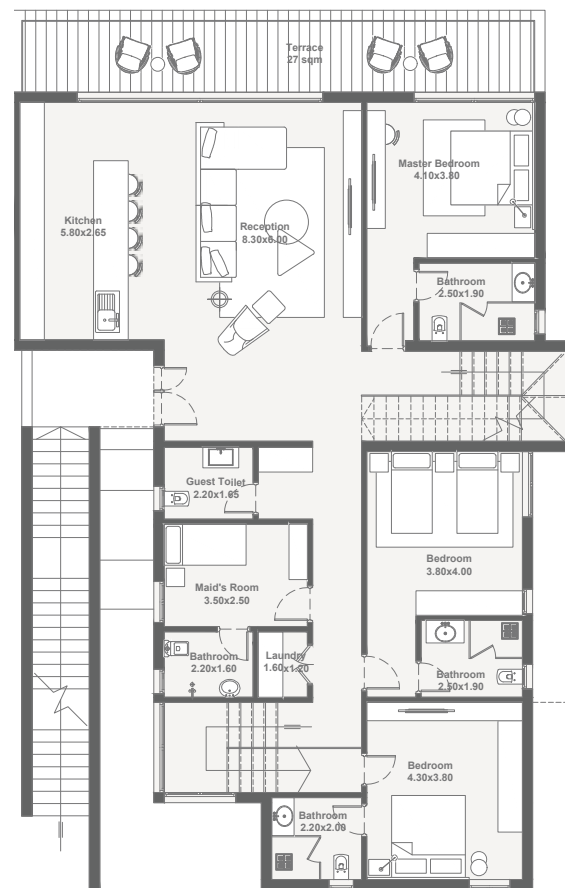
DISCLAIMER: Terraces are not included



HORIZON BEACH HOUSE (4BR)

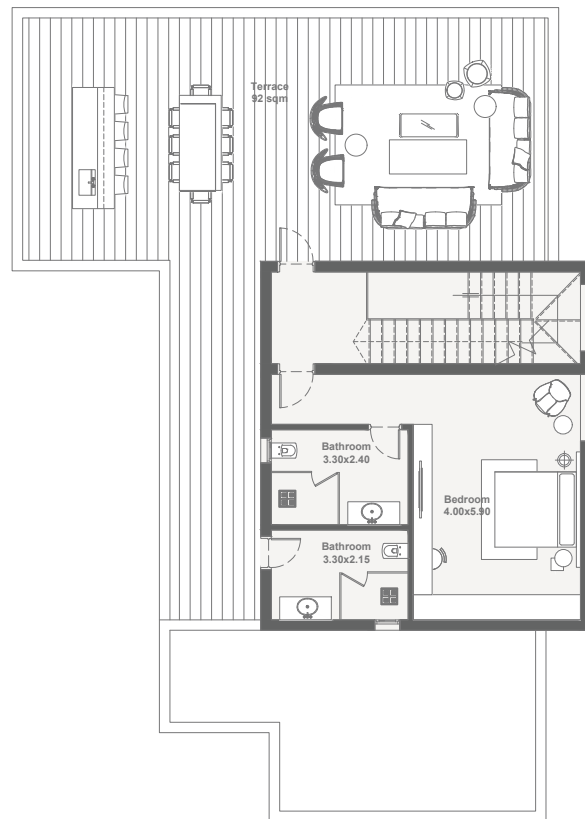
UPPER

net area	271 m ²
terraces	116 m ²
basement	11 m ²
stairs	25m ²
total area	282 m ²

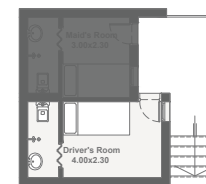


FIRST FLOOR

DISCLAIMER: Roof Terraces and stairs are not included



ROOF



BASEMENT

DISCLAIMER: *Roof Terraces and stairs are not included*

G R A N D B E A C H
H O U S E I



















GRAND BEACH HOUSE 1 (3BR)

GROUND

net area	176 m ²
terraces	34 m ²



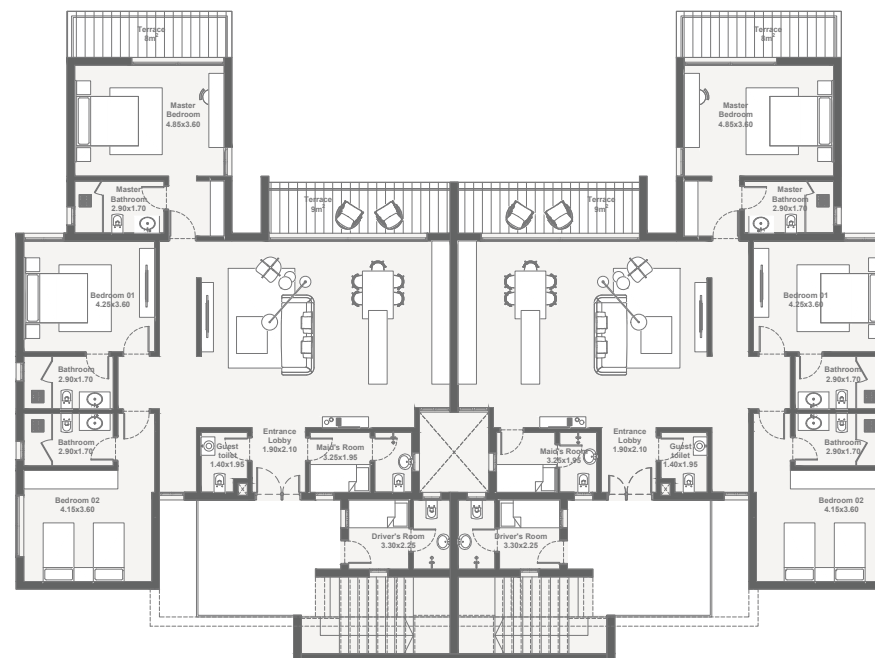
GROUND FLOOR

DISCLAIMER: Terraces are not included

GRAND BEACH HOUSE 1 (3BR)

UPPER

net area	174 m ²
terraces	34 m ²
core stairs	30.2 m ²



FIRST FLOOR

DISCLAIMER: Roof Terraces and stairs are not included

GRAND BEACH
HOUSE 2











GRAND BEACH HOUSE 2 (3BR)

WITH ROOF ACCESS ONLY

GROUND

net area	176 m ²
terraces	34 m ²



GROUND FLOOR

DISCLAIMER: Terraces are not included

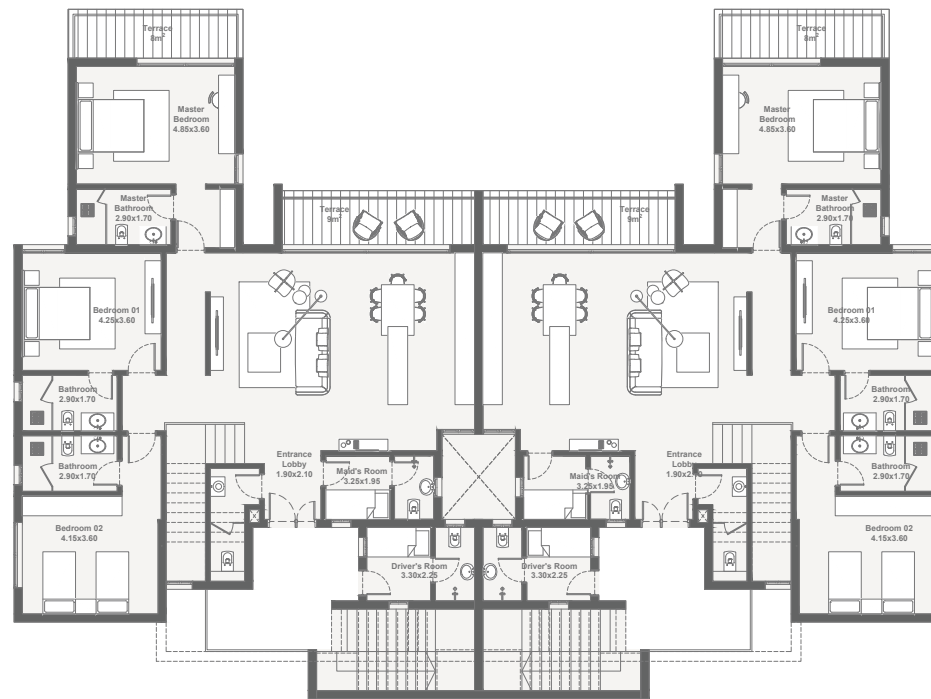


GRAND BEACH HOUSE 2 (3BR)

WITH ROOF ACCESS ONLY

UPPER

net area	190 m ²
terraces	34 m ²
roof terraces	140m ²



FIRST FLOOR

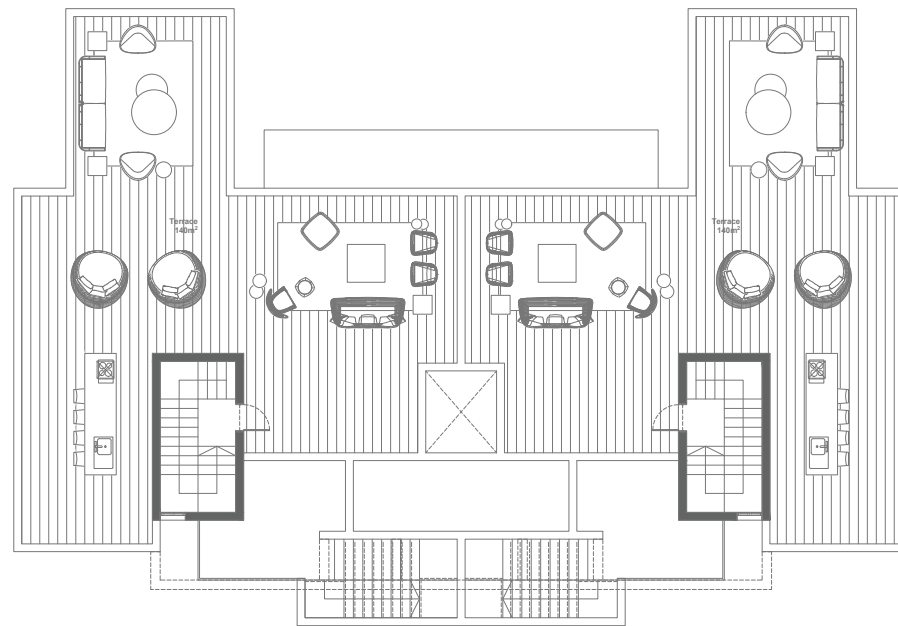
DISCLAIMER: Terraces are not included

GRAND BEACH HOUSE 2 (3BR)

WITH ROOF ACCESS ONLY

UPPER

net area	190 m ²
terraces	34 m ²
roof terraces	140m ²



ROOF PLAN

DISCLAIMER: Terraces are not included

GRAND BEACH
HOUSE 3









OPTIONAL WITH SHADE



OPTIONAL WITH SHADE





GRAND BEACH HOUSE 3 (3BR)

(GROUND)

net area 176 m²



GROUND

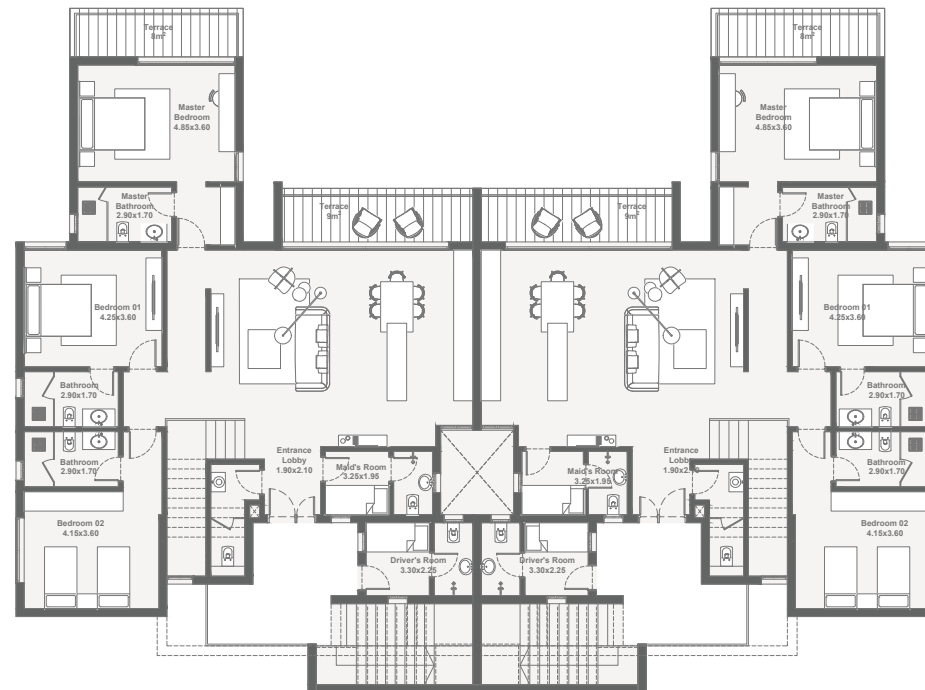
DISCLAIMER: Terraces are not included



GRAND BEACH HOUSE 3 (4BR)

(UPPER WITH ROOF & ROOM)

net area (left)	242 m ²
net area (right)	238 m ²
roof terraces	102 m ²



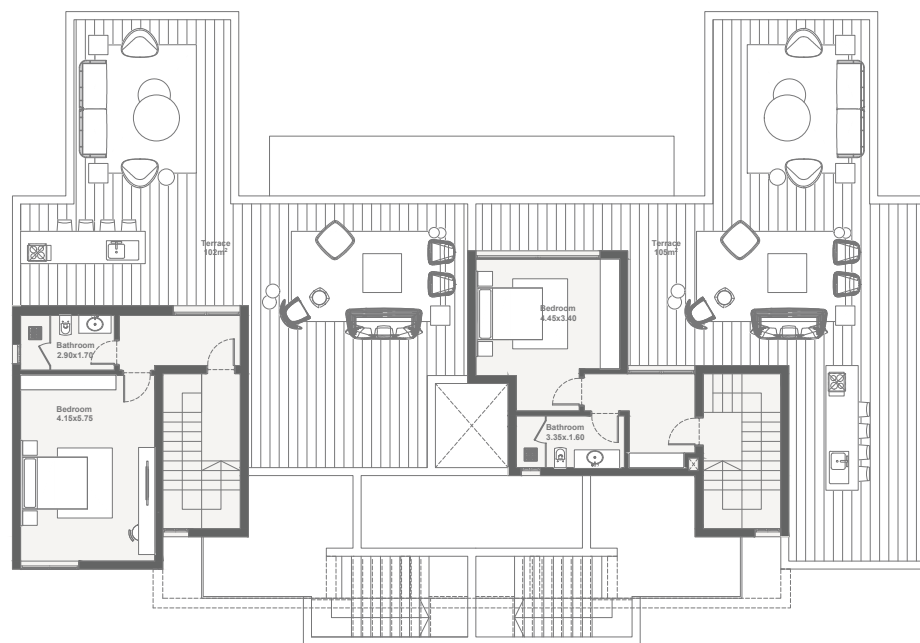
FIRST FLOOR

DISCLAIMER: Roof Terraces are not included

GRAND BEACH HOUSE 3 (4BR)

(UPPER WITH ROOF AND ROOM)

net area (left)	242 m ²
net area (right)	238 m ²
roof terraces	102 m ²



ROOF PLAN

DISCLAIMER: Roof Terraces are not included

G R A N D B E A C H

H O U S E 4















GRAND BEACH HOUSE 4 (4BR)

(GROUND)

net area (left) 217 m²



GROUND FLOOR

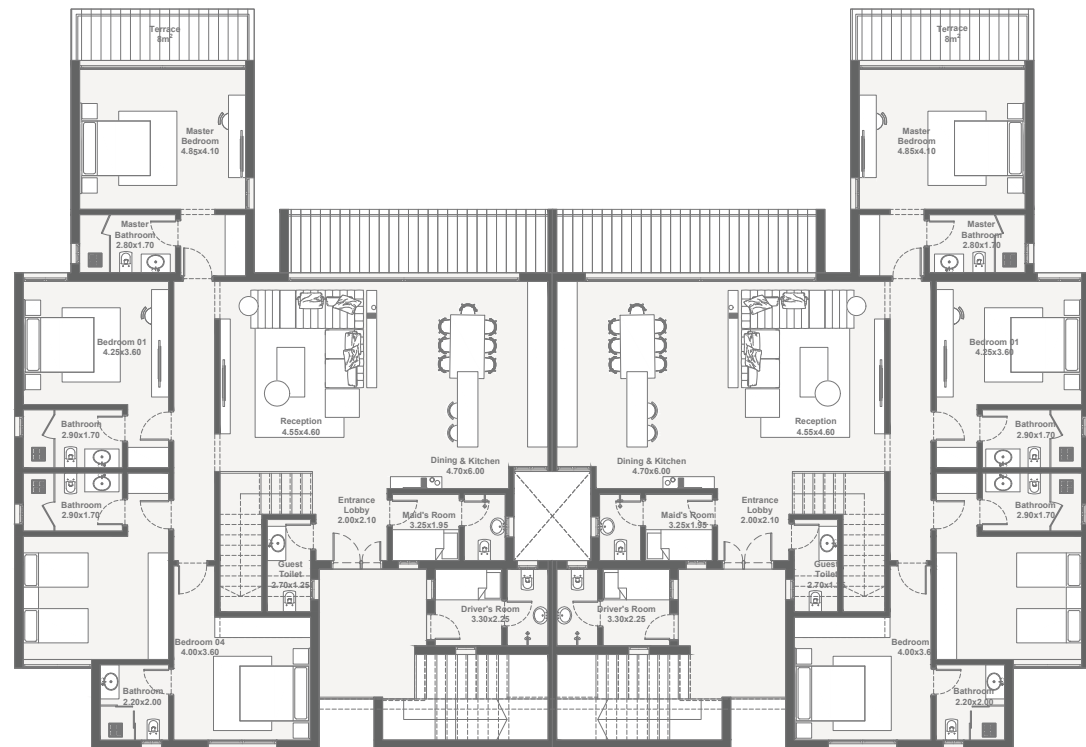
DISCLAIMER: Roof Terraces are not included



GRAND BEACH HOUSE 4 (4BR)

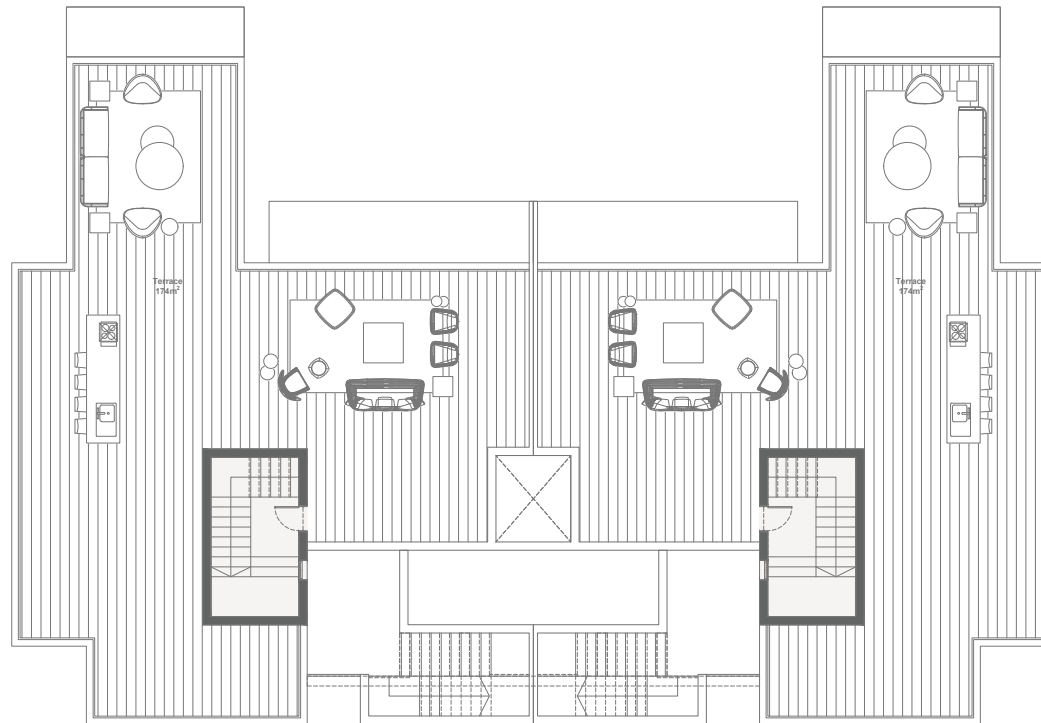
(WITH ROOF ACCESS ONLY)

net area (left)	234 m ²
terraces	23 m ²
roof terraces	179 m ²



FIRST FLOOR

DISCLAIMER: Roof Terraces are not included



ROOF PLAN

DISCLAIMER: Roof Terraces are not included

GRAND BEACH
HOUSE 5















GRAND BEACH HOUSE 5 (4BR)

(GROUND)

net area 217 m²



FIRST FLOOR

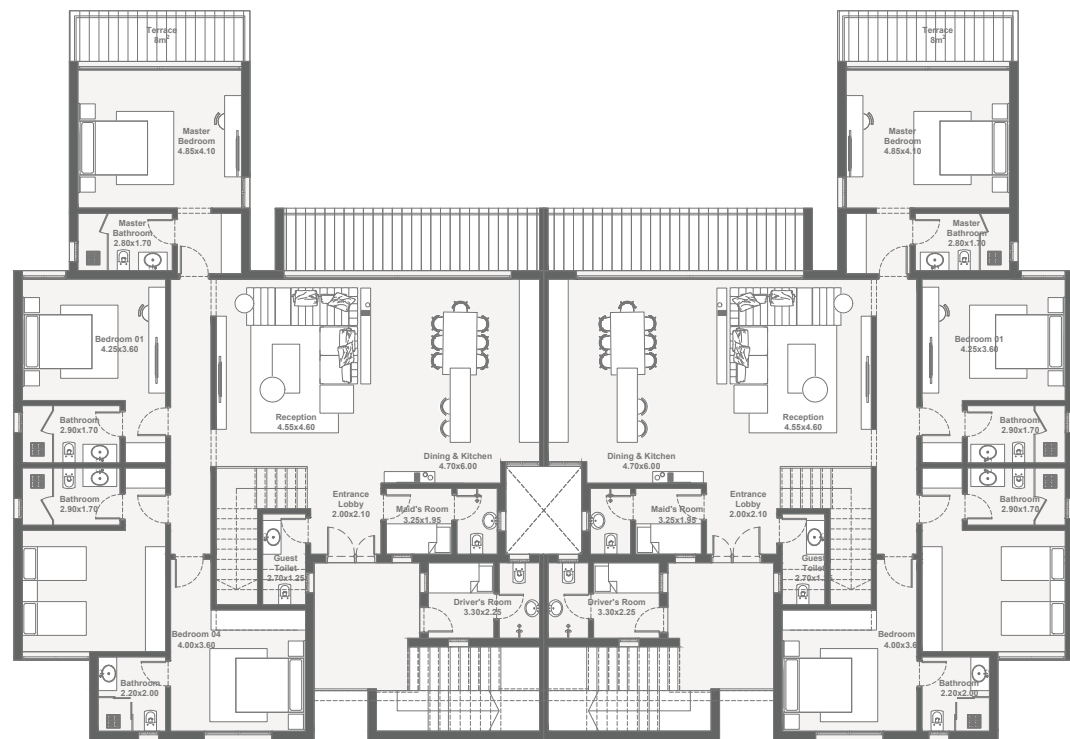
DISCLAIMER: Roof Terraces are not included



GRAND BEACH HOUSE 5 (4BR)

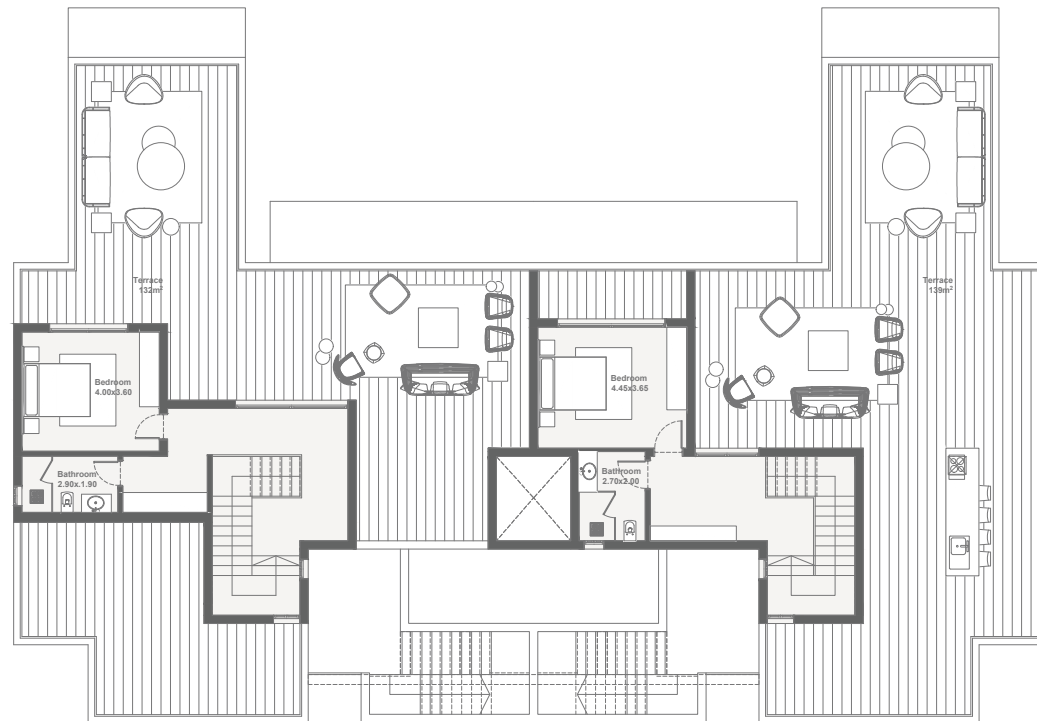
(UPPER WITH ROOF ACCESS AND ROOM)

net area (left)	277 m ²
terraces	23 m ²
roof terraces	145 m ²
net area (right)	271 m ²
terraces	23 m ²
roof terraces	154 m ²



FIRST FLOOR

DISCLAIMER: Roof Terraces are not included



ROOF PLAN

DISCLAIMER: Roof Terraces are not included



PLAYA | RAS EL HEKMA