

Seashell

Ras El Hekma



Introducing
Seashell Ras El Hekma





**life-lasting
summer
memories.**

TABLE OF CONTENTS

one. destination north

two. beach living

three. overview

four. integrated design

five. g developments

ONE

desti- nation north

location

A NATURAL PARADISE
CLOSER TO YOU.

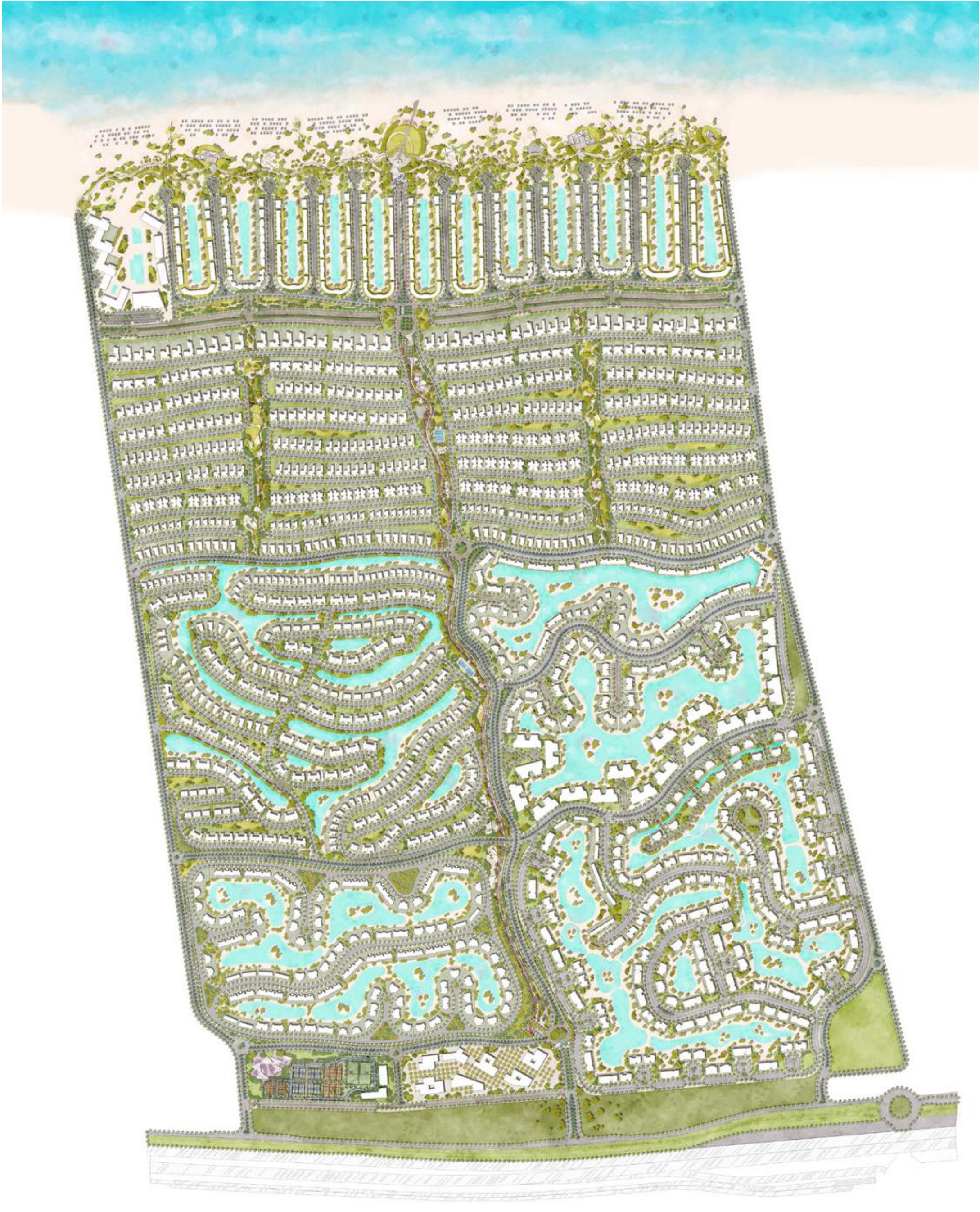


Located in the prime Ras El Hekma area, Seashell offers stunning beaches and crystal-clear waters. Its strategic position provides quick access to major highways, the North Coast’s attractions, and urban centers, making it the perfect seaside retreat with convenience at your doorstep.



This thoughtfully designed community features a harmonious blend of residential units, lush green spaces, and serene water features. Carefully planned roads and amenities create a vibrant, accessible, and sustainable neighborhood, offering residents a high-quality, modern lifestyle in a picturesque setting.

masterplan.



TWO

beach living

A woman with brown hair is lying on her back on a blue and white striped lounge chair that is floating in clear, turquoise water. She is wearing a white sleeveless top with a small circular detail on the chest. Her eyes are closed, and she has a peaceful expression. The water is rippling around the chair, and the overall scene conveys a sense of relaxation and connection with nature.

inspired design.

Drawing inspiration from natural elements, the design concept seamlessly blends curved forms and contemporary lines to create a fluid and harmonious living experience where intricate details speak volumes.

Large openings offer breathtaking views of the sea and lagoons while interiors take on the shape of waves and wind to immerse you in an airy ambiance.

Defined by sweeping curves, natural light, and expansive views, Seashell Ras El Hekma is a canvas for beach-inspired living at its best.

**A SERENE SANCTUARY OF
CALM, BLURRING THE LINES BE-
TWEEN OUTDOOR BEAUTY AND
INDOOR PRIVACY.**



Disclaimer
All materials, dimensions and drawings are approximate. Information is subject to change without notice. Drawings are not to scale and actual usable floor space may vary from the state floor plans. The developer reserves the right to make revisions to the floor plans.



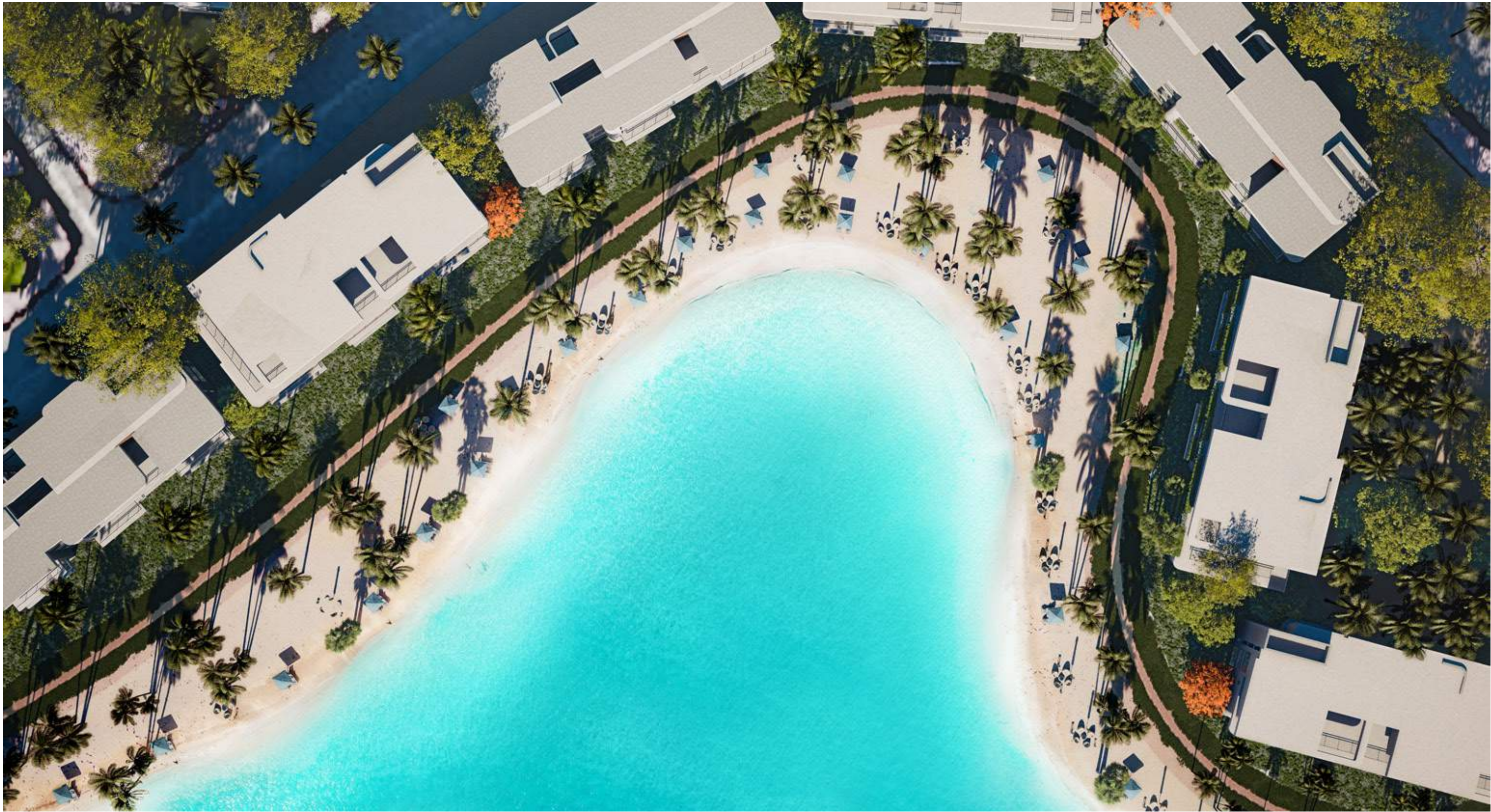
Disclaimer
All materials, dimensions and drawings are approximate. Information is subject to change without notice. Drawings are not to scale and actual usable floor space may vary from the state floor plans. The developer reserves the right to make revisions to the floor plans.



Disclaimer
All materials, dimensions and drawings are approximate. Information is subject to change without notice. Drawings are not to scale and actual usable floor space may vary from the state floor plans. The developer reserves the right to make revisions to the floor plans.



Disclaimer
All materials, dimensions and drawings are approximate. Information is subject to change without notice. Drawings are not to scale and actual usable floor space may vary from the state floor plans. The developer reserves the right to make revisions to the floor plans.



Disclaimer
All materials, dimensions and drawings are approximate. Information is subject to change without notice. Drawings are not to scale and actual usable floor space may vary from the state floor plans. The developer reserves the right to make revisions to the floor plans.



Disclaimer
All materials, dimensions and drawings are approximate. Information is subject to change without notice. Drawings are not to scale and actual usable floor space may vary from the state floor plans. The developer reserves the right to make revisions to the floor plans.



THREE

over-
view

a whole



new world

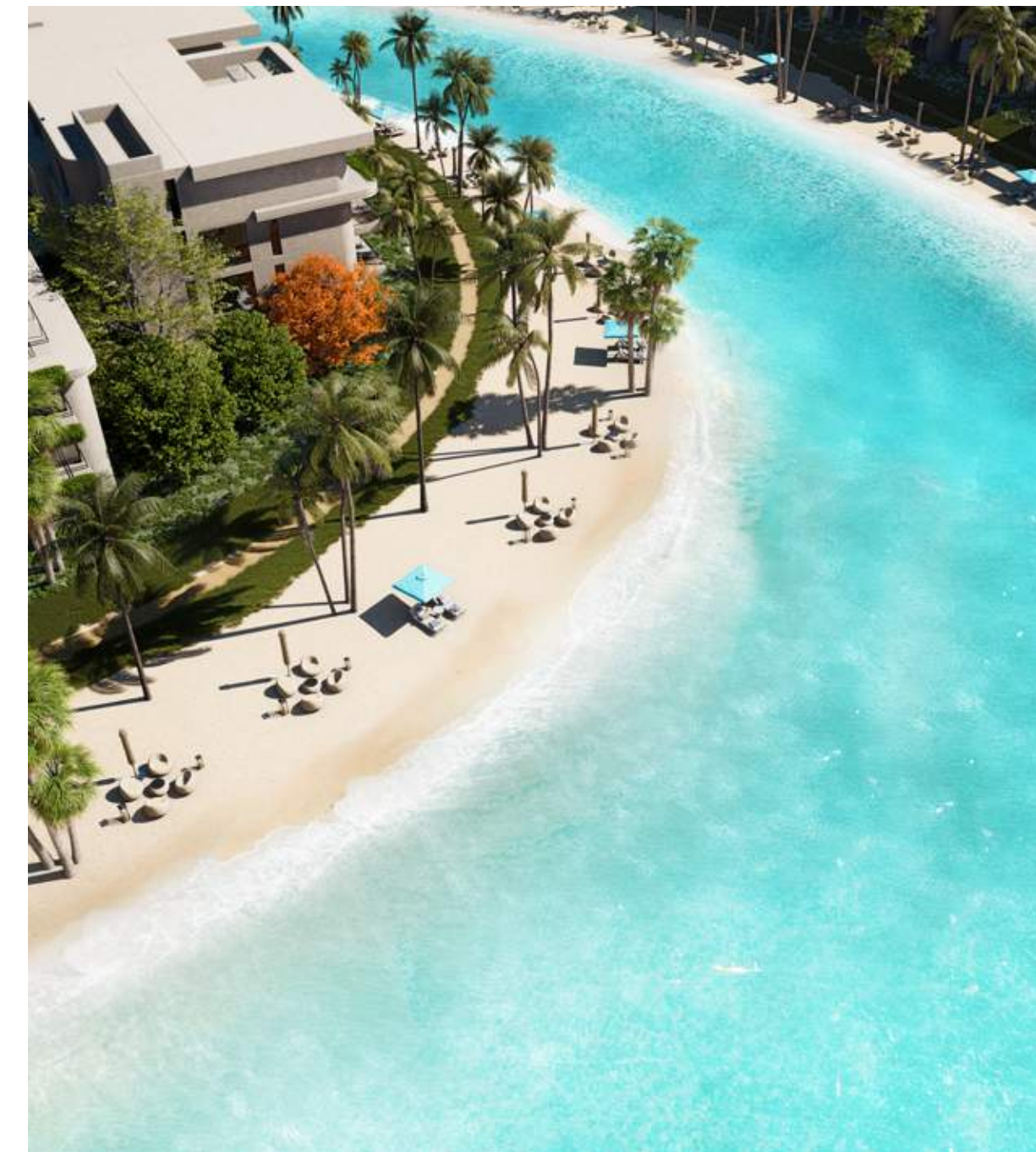


of coastal



possibilities





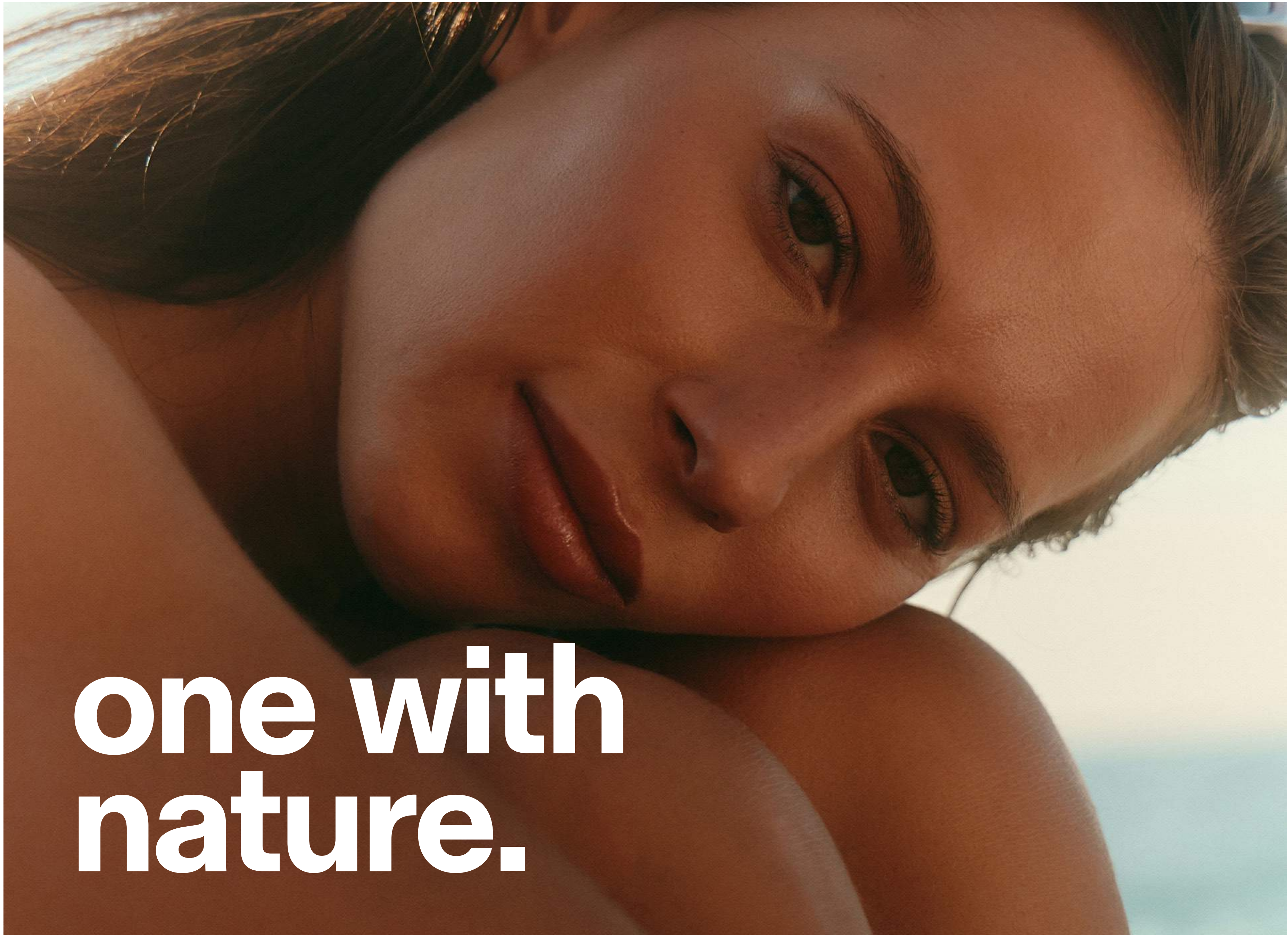
Disclaimer

All materials, dimensions and drawings are approximate. Information is subject to change without notice. Drawings are not to scale and actual usable floor space may vary from the state floor plans. The developer reserves the right to make revisions to the floor plans.



Disclaimer

All materials, dimensions and drawings are approximate. Information is subject to change without notice. Drawings are not to scale and actual usable floor space may vary from the state floor plans. The developer reserves the right to make revisions to the floor plans.




one with
nature.



An aerial photograph of a coastline. The top half of the image shows clear, turquoise water with visible ripples and small waves. The bottom half shows a wide, golden-yellow sandy beach. The text 'a natural gem, all yours!' is overlaid in large, white, sans-serif font on the water portion.

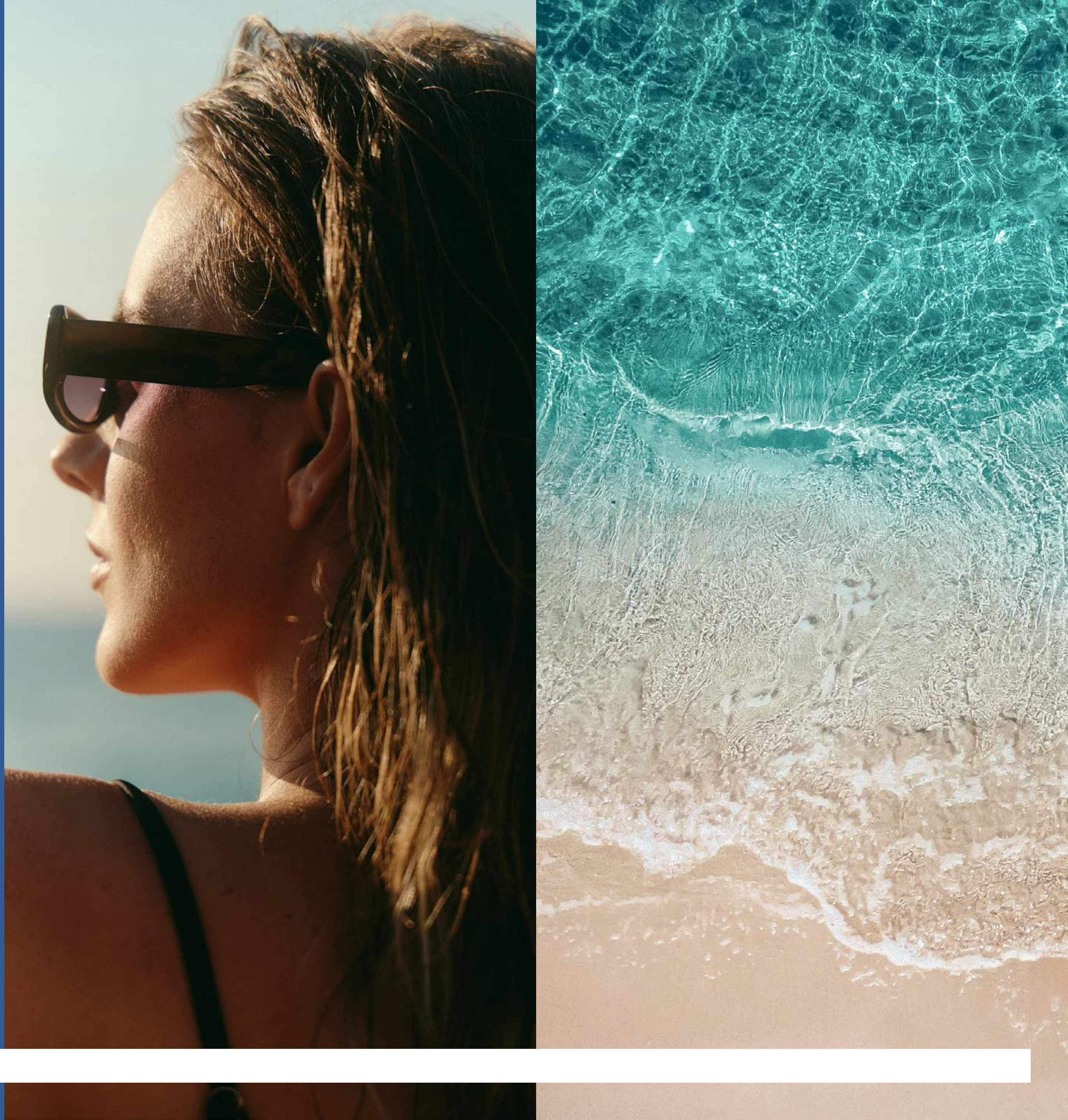
a natural gem, all yours!

The coastal gem is peacefully poised along the stunning coastline of the Mediterranean, opening your eyes on turquoise waters and sugar-soft sands, but above all, a true taste of serenity that defines your summer bliss.

A solid, dark blue horizontal bar spanning the width of the page at the bottom.

Whether you wish to relax, sunbathe or simply soak up the virgin beauty of nature, Seashell Ras El Hekma's 1.6 km private beach stretch promises all that and much more.

THE BEACH.





redefined
refined
hospitality



HOSPITALITY.

Refined hospitality with a personal touch lies at the heart of our ethos. With a distinguished branded 5 star hotel, Seashell Ras El Hekma elevates a new benchmark of international sophistication where world-class comfort converges with exceptional luxury to capture the imagination.

a refined home-
away-from-home
experience.



**a treasure-
trove of
authentic
experiences**





coastal commercial center

a journey of

non-stop

indulgence



COMMERCIAL HUB.

Life at Seashell Ras El Hekma is a journey of non-stop indulgence, thanks to a comprehensive commercial hub, beating with possibilities.

From memorable shopping sprees in hand-picked boutiques, exceptional dining catering to every taste, to convenient services, our commercial hub is where coastal living and worry-free business intersect seamlessly.





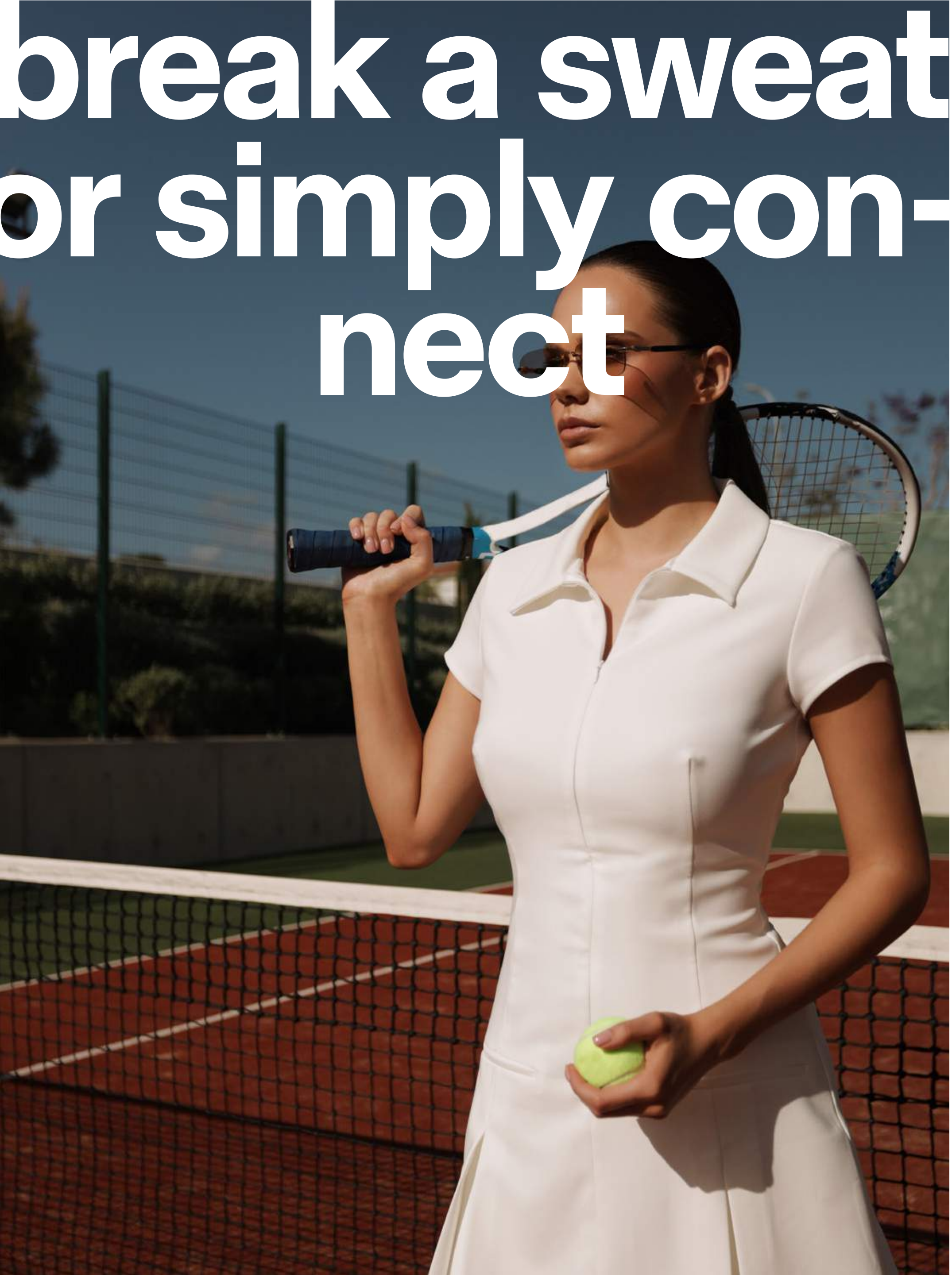
cutting- edge sports hub



Disclaimer
All materials, dimensions and drawings are approximate. Information is subject to change without notice. Drawings are not to scale and actual usable floor space may vary from the state floor plans. The developer reserves the right to make revisions to the floor plans.



Disclaimer
All materials, dimensions and drawings are approximate. Information is subject to change without notice. Drawings are not to scale and actual usable floor space may vary from the state floor plans. The developer reserves the right to make revisions to the floor plans.

A woman with dark hair tied back, wearing a white short-sleeved tennis dress and sunglasses, stands on a tennis court. She holds a tennis racket over her right shoulder and a yellow tennis ball in her left hand. The background shows a tennis court with a net and a fence under a clear blue sky.

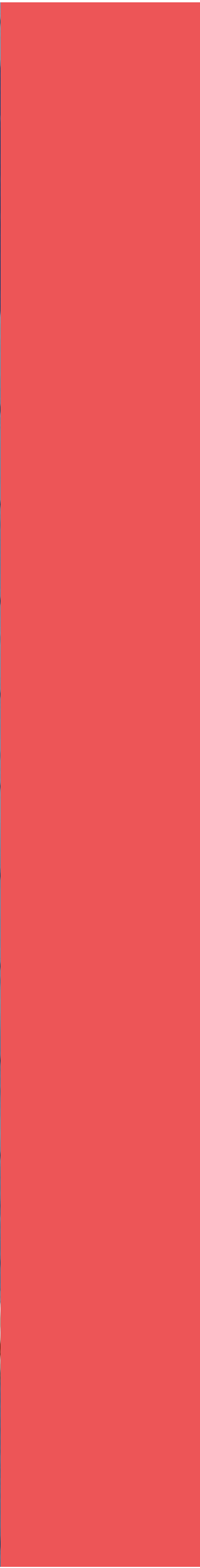
break a sweat or simply con- nect

SPORTS CLUB.

IDEAL FOR FITNESS EN- THUSIASTS AND LEISURE SEEKERS ALIKE.

The cutting-edge sports club is an energetic hub, buzzing with recreational activities and top-class facilities of every possible type.

Setting the stage for residents to stay active, unwind or simply socialize, the club boasts a dynamic host of sporting experiences; from well-equipped gyms and swimming pools to pro courts, and fitness classes, residents can expect a holistic wellness experience tailored to their needs.



- MINIATURE GOLF**
- TENNIS COURT**
- PADDLE COURT**
- OUTDOOR
FITNESS AREA**
- PADEL COURTS**
- BADMINTON COURT**
- SPA BUILDING**
- KIDS AREA**
- RETAIL KIOSKS**
- SQUASH COURTS**
- CROQUET COURTS**
- CASCADING POOL**



FOUR

integrated design



This thoughtfully designed community integrates walkways, green spaces, and modern amenities, creating a vibrant, pedestrian-friendly environment. With dedicated bike lanes, retail outlets, a BBQ area, sitting spaces, a dog park, and sustainable transport options, it offers residents a convenient, connected, and eco-conscious lifestyle in a beautifully landscaped setting.

landscape



Disclaimer
All materials, dimensions and drawings are approximate. Information is subject to change without notice. Drawings are not to scale and actual usable floor space may vary from the state floor plans. The developer reserves the right to make revisions to the floor plans.



lagoons



BEACH LAGOONS

Disclaimer
All materials, dimensions and drawings are approximate. Information is subject to change without notice. Drawings are not to scale and actual usable floor space may vary from the state floor plans. The developer reserves the right to make revisions to the floor plans.



LAGOONS

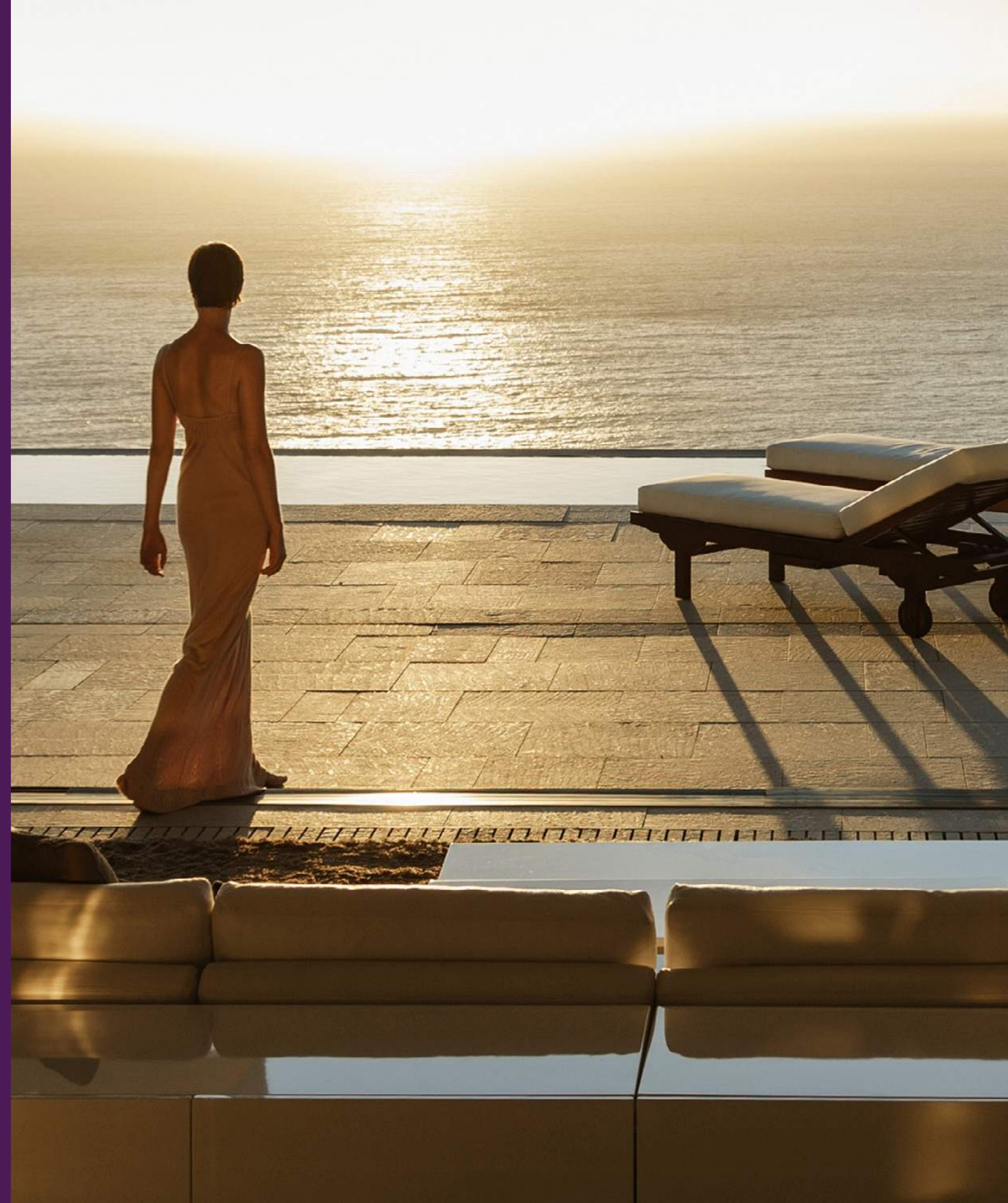
Disclaimer
All materials, dimensions and drawings are approximate. Information is subject to change without notice. Drawings are not to scale and actual usable floor space may vary from the state floor plans. The developer reserves the right to make revisions to the floor plans.



LAGOONS

Disclaimer
All materials, dimensions and drawings are approximate. Information is subject to change without notice. Drawings are not to scale and actual usable floor space may vary from the state floor plans. The developer reserves the right to make revisions to the floor plans.

our
homes





Disclaimer
All materials, dimensions and drawings are approximate. Information is subject to change without notice. Drawings are not to scale and actual usable floor space may vary from the state floor plans. The developer reserves the right to make revisions to the floor plans.



Disclaimer
All materials, dimensions and drawings are approximate. Information is subject to change without notice. Drawings are not to scale and actual usable floor space may vary from the state floor plans. The developer reserves the right to make revisions to the floor plans.



Disclaimer
All materials, dimensions and drawings are approximate. Information is subject to change without notice. Drawings are not to scale and actual usable floor space may vary from the state floor plans. The developer reserves the right to make revisions to the floor plans.



Disclaimer

All materials, dimensions and drawings are approximate. Information is subject to change without notice. Drawings are not to scale and actual usable floor space may vary from the state floor plans. The developer reserves the right to make revisions to the floor plans.



Disclaimer
All materials, dimensions and drawings are approximate. Information is subject to change without notice. Drawings are not to scale and actual usable floor space may vary from the state floor plans. The developer reserves the right to make revisions to the floor plans.

FIVE

G Devel- opments

about the G Develop- ments.

G Developments

G Developments is a leading real estate development company in Egypt, renowned for its commitment to innovation, quality, and sustainability in property development.

With a focus on creating exceptional living spaces that cater to modern lifestyles, the company has established a strong footprint in the Egyptian real estate market.

seashell **P L A Y A** **PLAYA** | RAS EL HEKMA **Seashell** Ras El Hekma C I T Y V I E W 2 . 0

Address

6, Shagaret El Dor St, Zamalek,
Zip Code 11211, P.O.Box 403 El Gezira, Cairo, Egypt.

T +202 33450797 F +202 33030784
info@thegdevelopments.com

G Developments